

**Penfolds,
Property People.**

Hillyfield, Billingshurst.

£620,000 Freehold



Penfolds, Specification.

This stylishly designed property provides a perfect blend of comfort and functionality. With a thoughtfully proportioned open-plan kitchen/diner and doors opening onto the patio, there is ample entertaining space, ideal for modern family life. Every room is light and bright and with four bedrooms, there's plenty of room for everyone to unwind and recharge. The house was designed by Bellway Homes with attention to detail and quality in the process and has made a lovely family home in which to bring up children.

- Wonderful detached family home
- Countryside walks from the front door
- Garage and off street parking
- Private Road
- Built by Bellway Homes in 2021 to standard construction
- Mains gas heating system
- EPC: B Horsham District Council Band F
- Service charge £546.00 per annum
- Less than a mile to Billingshurst mainline station





"Our house has bright open rooms, with a really lovely kitchen diner. There is fabulous countryside walking from our front door, and Hillyfield is a wonderful small community, with fun and friendly neighbourly events! We really do love it here, and will be desperately sad to leave."

The owner

01403 289414

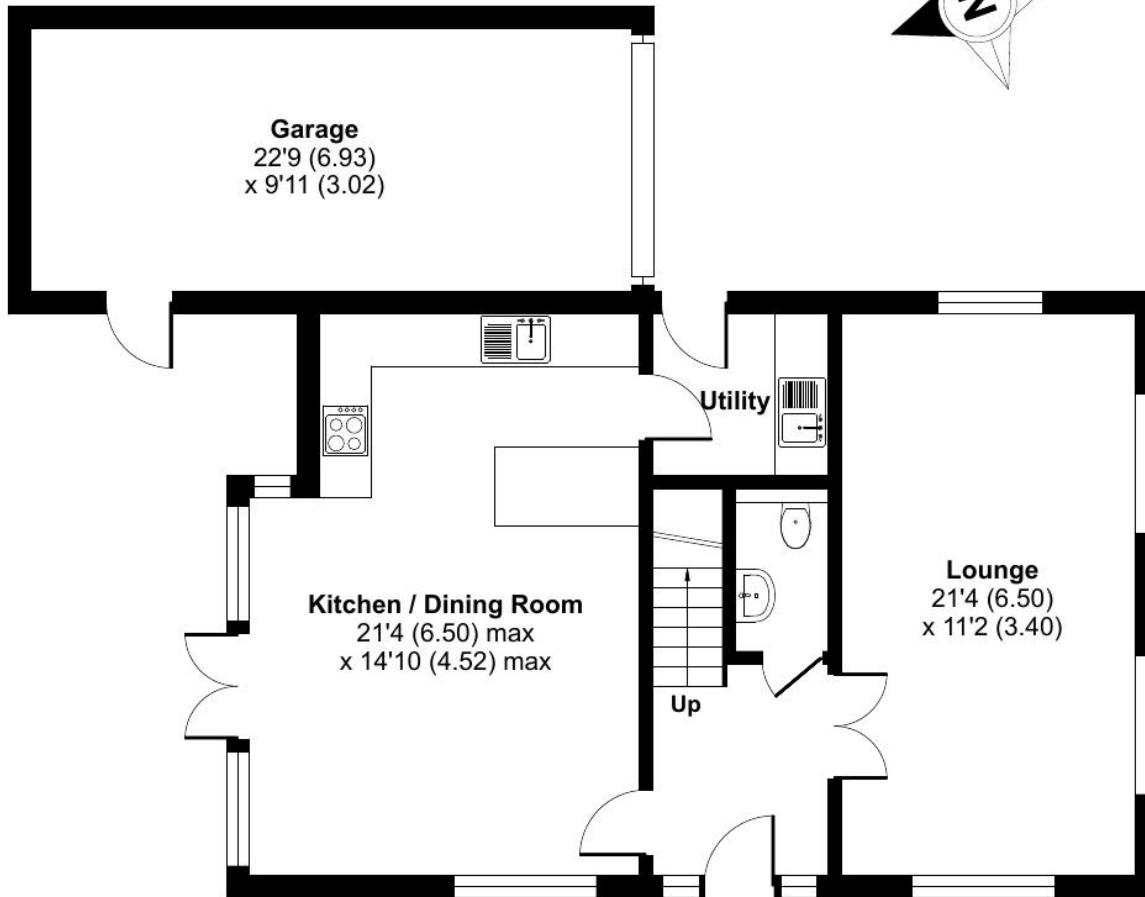
enquiries@penfoldsestateagents.co.uk

Approximate Area = 1361 sq ft / 126.4 sq m

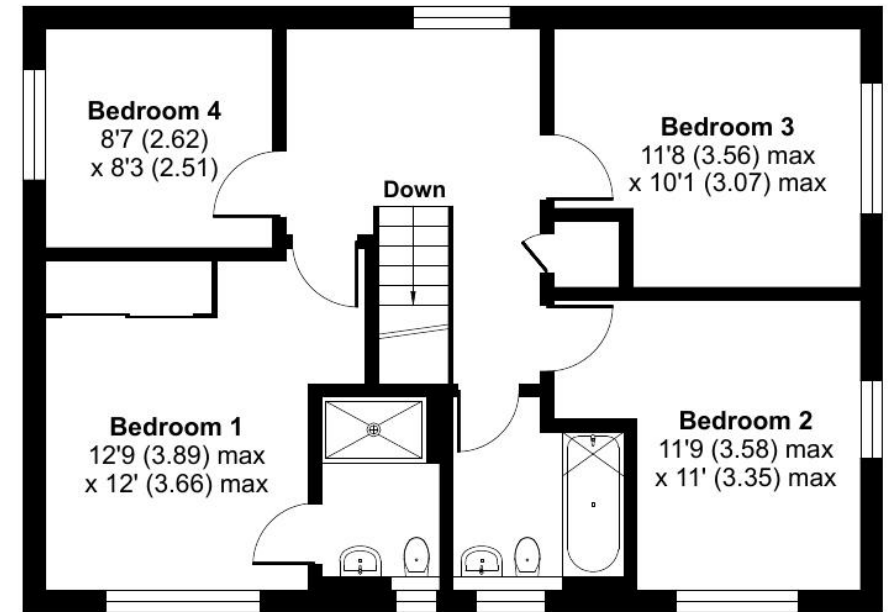
Garage = 228 sq ft / 21.1 sq m

Total = 1589 sq ft / 147.5 sq m

For identification only - Not to scale



GROUND FLOOR



FIRST FLOOR

