

Penfolds,
Property People.

Hitherwood, Cranleigh.
£500,000 Freehold



Penfolds, Specification.

This lovely bright and airy house would perfectly suit a growing family or someone wanting to downsize and stay in the village. One of its many benefits is its location within the sought after Hitherwood. Tucked away at the top of this popular cul-de-sac and only a short walk, away from the main road, to the supermarket, leisure centre, library, doctors and all the other amenities the village has to offer. The house has been tastefully decorated and provides open plan accommodation perfect for easy modern living. Bi-folding doors open out from the dining room on to the south facing patio and garden, a great space for barbecues and summer entertaining, whilst the gas fire in the sitting room makes a cosy room perfect for winter evenings.

- 3 bedrooms
- Bathroom
- Cul de sac location
- Cut through to centre of village
- Open plan accomodationn
- Light and bright decor
- Bi-folding doors to south facing pation & garden
- Cloakroom
- Garage
- EPC: D

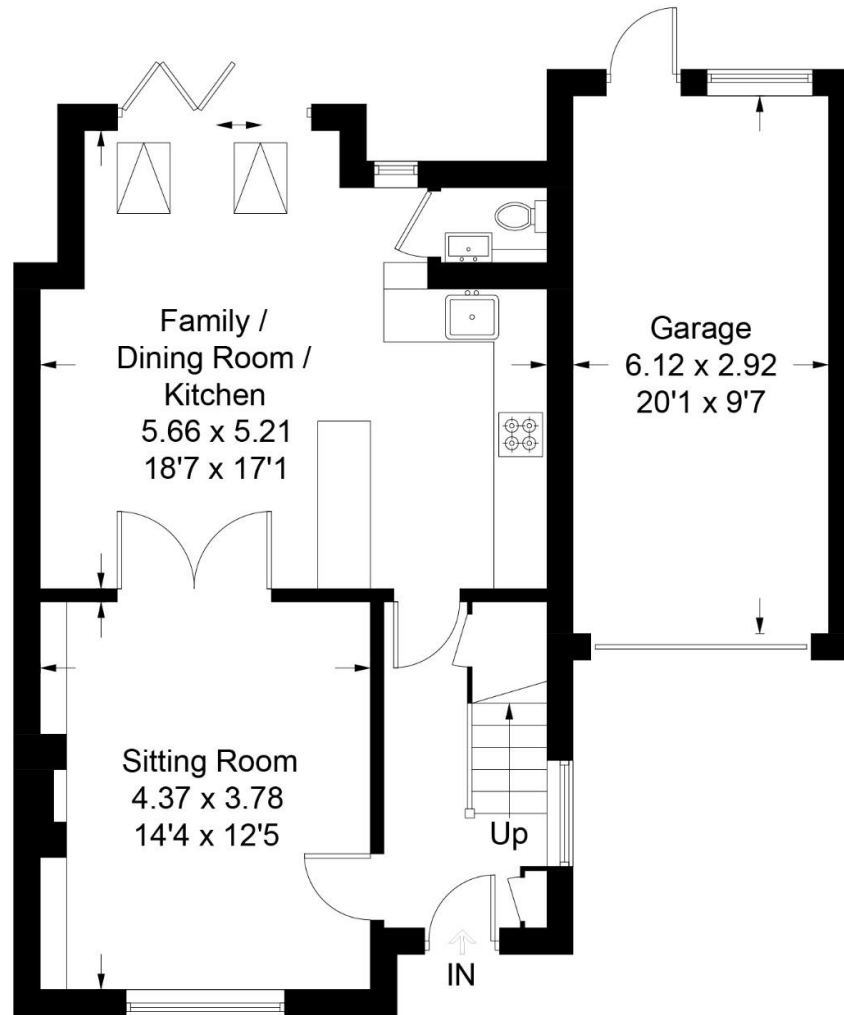




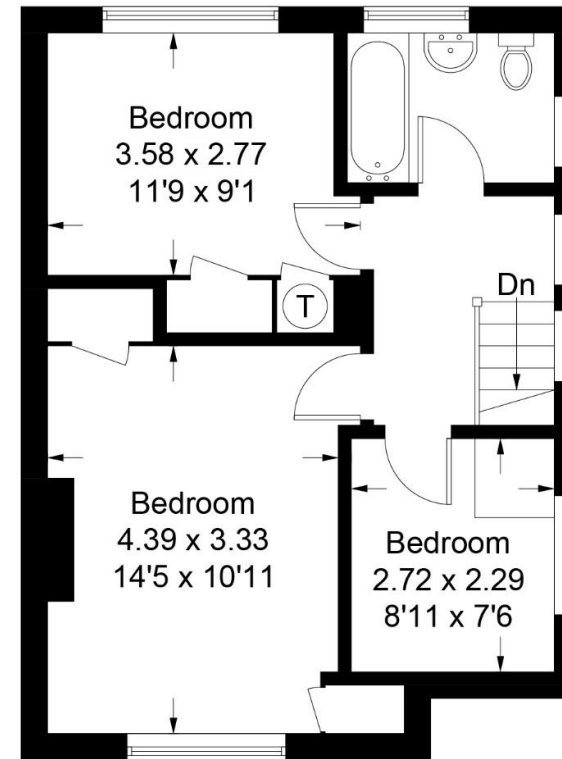
'Hitherwood has been the perfect place to live whilst our children were so young. With a cut through just yards from our house leading to Snoxhall Park and the village, we have everything Cranleigh has to offer just 5 minutes walk away.'

01403 289414
enquiries@penfoldsestateagents.co.uk

Approximate Gross Internal Area = 97.2 sq m / 1046 sq ft
Garage = 17.8 sq m / 191 sq ft
Total = 115.0 sq m / 1237 sq ft



Ground Floor



First Floor

This plan is for layout guidance only. Not drawn to scale unless stated. Windows and door openings are approximate. Whilst every care is taken in the preparation of this plan, please check all dimensions, shapes and compass bearings before making decisions reliant upon them. (ID582161)